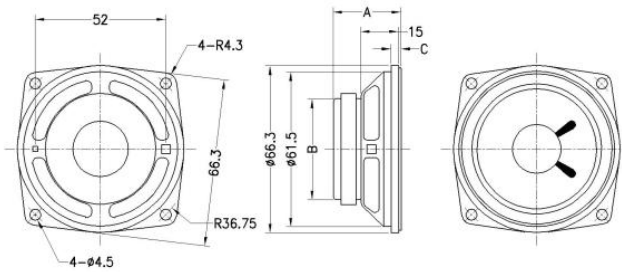
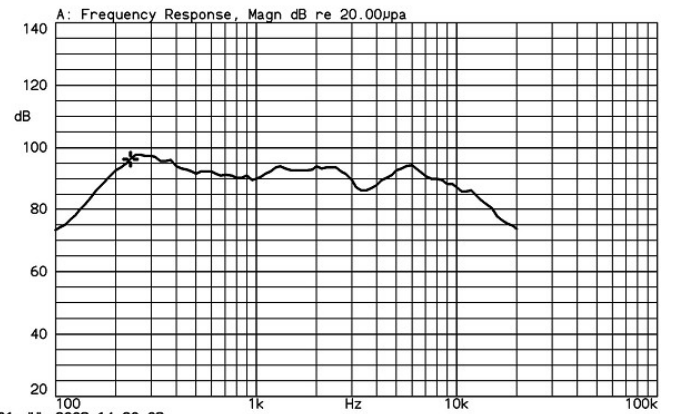


Model Number : LF-K6666B30A
 Nominal Impedance : $8 \Omega \pm 15\%$
 Resonant frequency (F0) : $240 \text{ Hz} \pm 48\text{Hz}$
 Effective Freq. Range : $F_0 \sim 20 \text{ KHz}$
 Sound Pressure Level (dB) : $85 \pm 3\text{dB} / 50\text{cm}$
 Input Power (Nom. / Max.) : $10\text{W} / 15\text{W}$
 Distortion : $5\% \text{max. at } 1\text{KHz}$
 Operating Temp range : $-20 \text{ }^\circ\text{C} \sim +60 \text{ }^\circ\text{C}$



LF-K6666B30A 2.83Vrms by IEC268-5 1/2 std baffle 50cm
 X:236.00Hz *Y:96.23dB ZA:Live Curve SSR Fund.



01-JUL-2008 14:20:08

Mode: SSR

