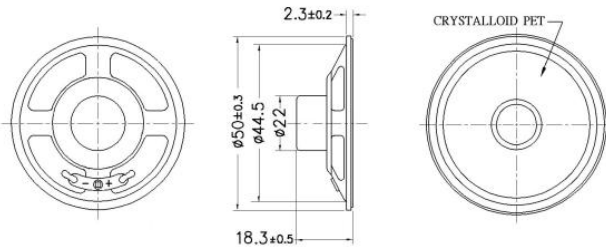
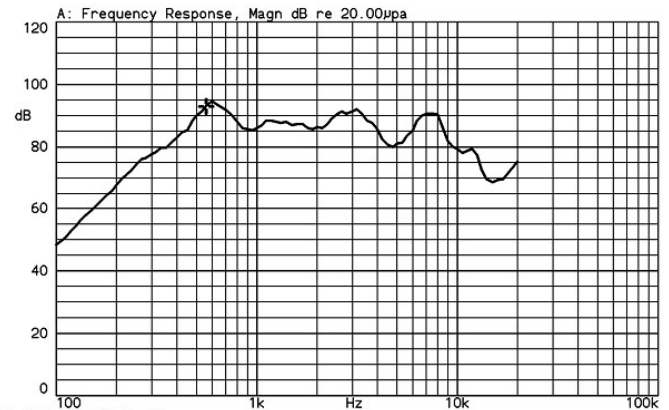


Model Number : LF-K50B18B  
 Nominal Impedance :  $8 \Omega \pm 15\%$   
 Resonant frequency ( F0 ) :  $570 \text{ Hz} \pm 20\%$   
 Effective Freq. Range :  $F_0 \sim 20\text{KHz}$   
 Sound Pressure Level ( dB ) :  $87 \pm 3\text{dB} / 50\text{cm}$   
 Input Power ( Nom. / Max. ) :  $0.3\text{W} / 0.5\text{W}$   
 Distortion :  $5\%\text{max. at } 1\text{KHz}$   
 Operating Temp range :  $-20 \text{ }^\circ\text{C} \sim +60 \text{ }^\circ\text{C}$



LF-K50B18B 1.55Vrms by IEC268-5 1/2 std baffle 50cm  
 X:560.00Hz \*Y:92.82dB ZA:Live Curve SSR Fund.



13-FEB-2007 15:36:55

Mode: SSR

