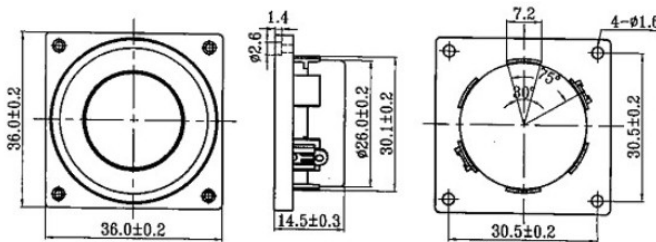
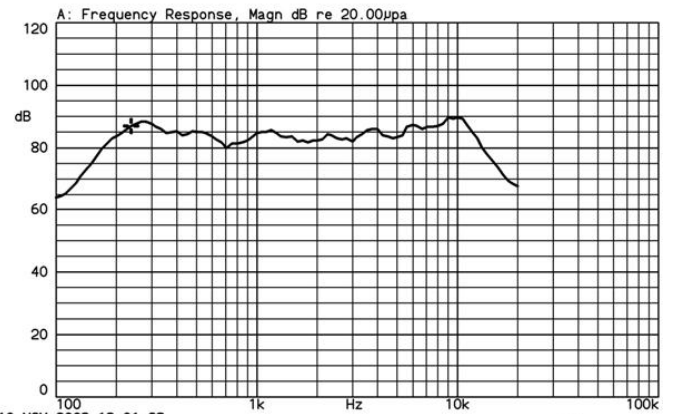


Model Number : LF-K3636B15C
 Nominal Impedance : $8 \Omega \pm 20\%$
 Resonant frequency (F0) : 230Hz $\pm 20\%$
 Effective Freq. Range : Fo ~ 20KHz
 Sound Pressure Level (dB) : $83 \pm 3\text{dB} / 50\text{cm}$
 Input Power (Nom. / Max.) : 2.0W / 4.0W
 Distortion : 5%max. at 1KHz
 Operating Temp range : $-20 \text{ }^\circ\text{C} \sim +60 \text{ }^\circ\text{C}$



K3636B15C 2.83Vrms by IEC268-5 1/2 std. baffle 50cm
 X:236.00Hz *Y:87.06dB ZA:Live Curve SSR Fund.



10-NOV-2003 13:01:28

Mode: SSR

