

Model Number : LF-K23D37A

Nominal Impedance : $32\Omega \pm 15\%$

Resonant frequency (F0) : $790\text{Hz} \pm 20\%$

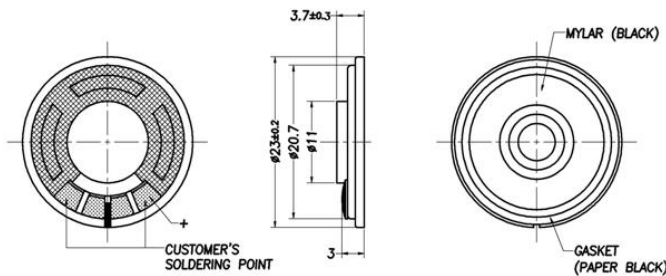
Effective Freq. Range : $F_0 \sim 20\text{KHz}$

Sound Pressure Level (dB) : $94 \pm 3\text{dB} / 10\text{cm}$

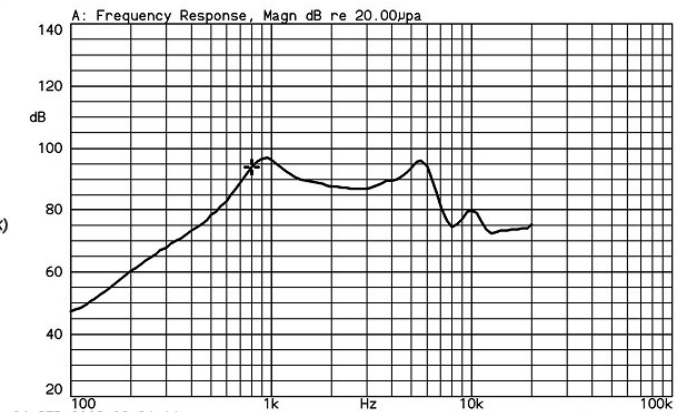
Input Power (Nom. / Max.) : $0.1\text{W} / 0.2\text{W}$

Distortion : $10\%\text{max. at } 2\text{KHz}$

Operating Temp range : $-20\text{ }^\circ\text{C} \sim +60\text{ }^\circ\text{C}$



LF-K23D37A 1.79Vrms by IEC268-5 1/2 std baffle 10cm
X:800.00Hz *Y:93.96dB ZA:Live Curve SSR Fund.



26-SEP-2008 09:36:16

Mode: SSR

