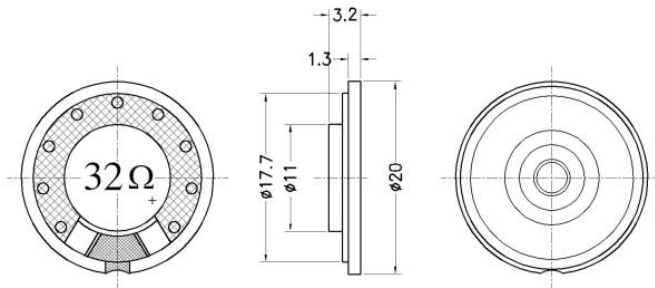




Model Number : LF-K20D31A  
 Nominal Impedance :  $32\Omega \pm 15\%$   
 Resonant frequency ( F0 ) :  $860\text{Hz} \pm 20\%$   
 Effective Freq. Range :  $F_0 \sim 20\text{KHz}$   
 Sound Pressure Level ( dB ) :  $95 \pm 3\text{dB} / 10\text{cm}$   
 Input Power ( Nom. / Max. ) :  $0.5\text{W} / 0.8\text{W}$   
 Distortion :  $5\%\text{max. at } 1\text{KHz}$   
 Operating Temp range :  $-20\text{ }^\circ\text{C} \sim +60\text{ }^\circ\text{C}$



LF-K20D31A 4.0Vrms by IEC268-5 1/2 std baffle 10cm  
 X:850.00Hz \*Y:96.70dB ZA:Live Curve SSR Fund.

